

582

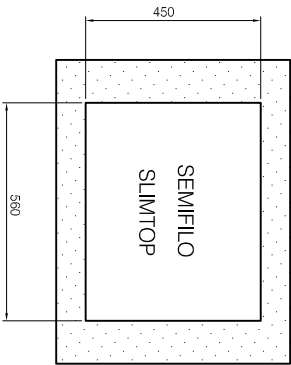
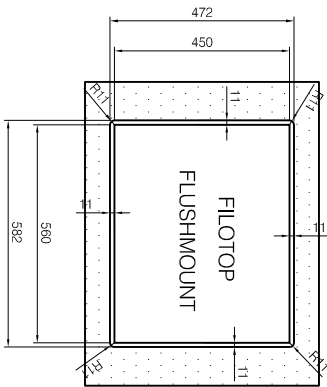
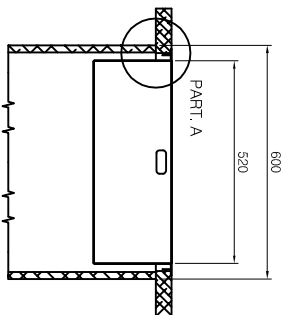
PPX 210-58

- Dimensioni foratura top
- Cut-out sizes
- Dimensions de découpe
- Dimensiones de coupe
- Ausschnittmaße

PART. A

- Dima per foratura top
- Template worktop cut-out
- Gabarit de découpe
- Platilla de coupe
- Schablone für Ausschnitt

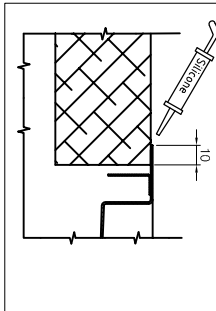
- Base mm 600
- Cabinet mm 600
- Caisson mm 600
- Alueud mm 600
- Unterschrank mm 600



(FILOTOP-FLUSHMOUNT)

- Si raccomanda sigillatura con silicone
- Silicone recommended
- Assure l'étanchéité au silicone
- Silicon
- Silikonabdichtung ist empfehlenswert

(SEMI FILO-SLIMTOP)



COD. 993.0090.867
 BARCODE EAN 13
 76 12319 4852 7



Franke S.p.A.
 Via Pignolini, 2
 37019-Peschiera di Garda

TOLLERANZE GENERALI NON INDICATE			
mm	1 - 6	0 - 1	±
6 - 30	0,2	±	
30 - 100	0,3		
100 - 300	0,5		
300 - 1000	0,8	±	
1000 - 2000	1,2		

IM	Data	Disegnatore	IM	Data	Disegnatore
1		6			
2		5			
3		4			
4		3			

Materiali: _____ Finitura: _____ SP.: _____ COMM.: _____ -DEL _____ Scale: _____

COMMITTENTE: FRANKIE
 MODELLO/RIE: PPX 210-58
 DIMENSIONI: _____

DATA ORD.: _____ N.ORD.: _____ N. PREV.: _____

Disegnatore: **Bailli** Data: 14/02/06
 Disegno: 9930090867

